

***Here is your set of  
Detailed Plans  
from***



**Trademark Applied For**

**©All Rights Reserved**

## NOTICE

Your purchase of these plans entitles you to unlimited personal use of them. Feel free to pass them around but publication or copying, for other than personal use, is prohibited. The rights to these plans, their sale, resale, use, publication, and distribution belong to Keith O. Davies (The Woodcrafter), as explained on my "Detailed Plans" page at [TheWoodcrafter.net](http://TheWoodcrafter.net). If you encounter any problems with these plans, please email me at [plans@TheWoodcrafter.net](mailto:plans@TheWoodcrafter.net) and I will respond as quickly as possible.

## Pueblo Bird House



This bird house makes a great decoration for your sun room or deck. It is built fully functional and can be used to attract wild birds, such as some wrens or martins, but its design may not be appropriate for any of the birds in your area. Be sure to visit the **U.S. Geological Survey** site at <http://www.npwrc.usgs.gov/resource/tools/birdhous/specs.htm> for detailed information on how to attract birds and the proper construction and use of birdhouses.

This package includes, in order, a materials list, required tools list, step-by-step construction directions, tips, a parts layout diagram, scale building drawings 1 - 8 (scale not specified), and full size templates A - L.



**Materials List:**

Any 3/4" (finished dimension) planking material will work. Knot free Pine would be my first choice. It is always a wise move to buy extra material to allow for mistakes and problems with the materials. If you are not very experienced, consider buying nearly 50% extra.

<u>Quan</u>	<u>Length</u>	<u>Description</u>
1	8'	1" x 10" planking (3/4" x 9 1/2 " finished dimensions).
1	can	Earthtone – Stone Creations type spray finish.
1	can	Exterior – clear wood spray finish (Satin).

**Tools required:**

<u>Recommended</u>	<u>Optional</u>	<u>Will Do</u>
Band saw	Table saw	Saber Saw
Drill Press	Power Drill	Hand Drill
Misc. screwdrivers, hammers and basic woodshop hand tools.		

**Construction:**

All dimensions must be cut to the exact size given unless otherwise indicated.

*Notes are printed in smaller sized Italics print.*

**Basic sizing cuts. (Page 1 of drawings.)**

*Cut any split or chipped ends off the 1 x 10 stock before cutting any pieces to size.*

*For each piece, select a location in the wood to avoid any knots or cracks.*

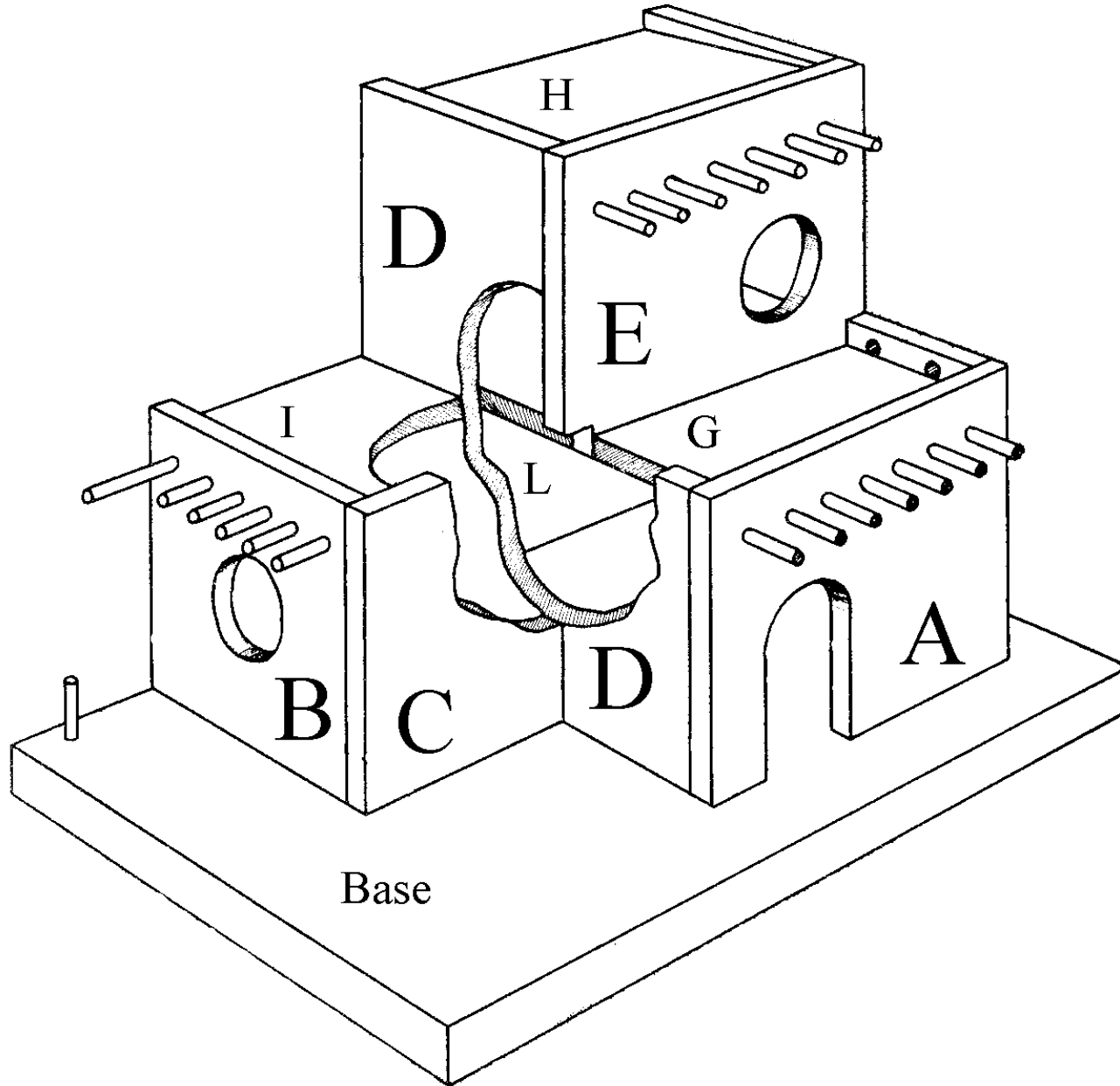
1. Cut a 15" length of the 1" x 10" planking for the base.
2. Cut the front entrance (A) to 6 1/2 " by 5 1/4".
3. Cut one piece to 5" by 10" for the cactus.

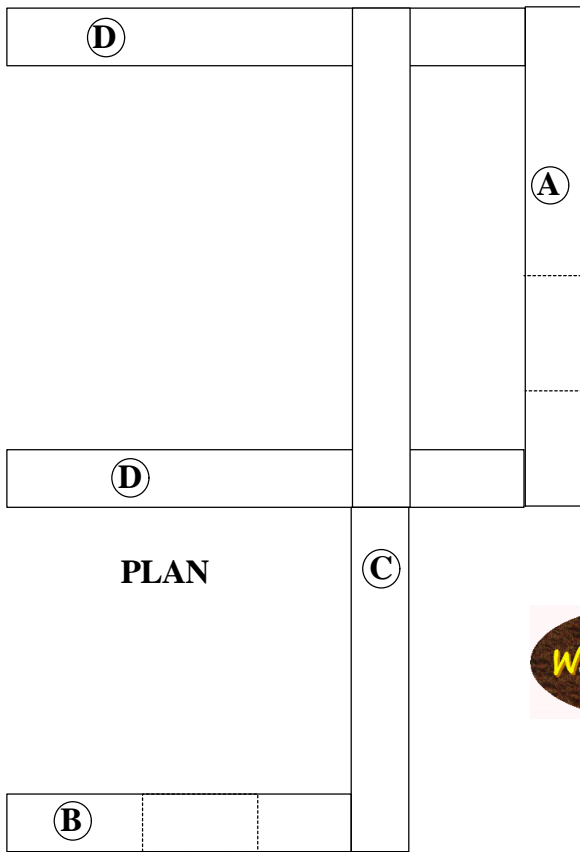
**Entrance holes.**

1. On the side entrance (B), mark the center of the entrance with a point 2" from the top and centered (2 1/2 " from either side).
2. Cut the rest of the door out with two cuts from the bottom of the wall to the hole on the band saw: One cut 1 1/2 " from the left edge and the other cut 3" from the left edge.

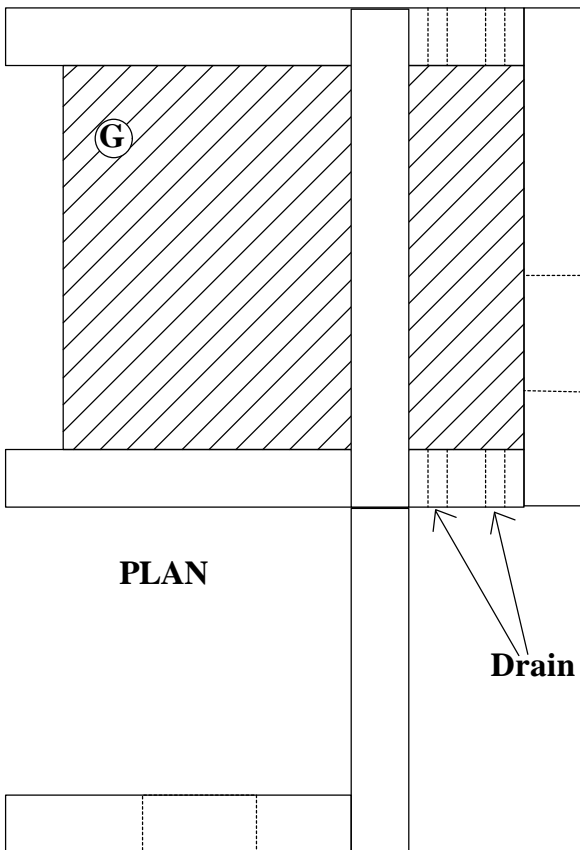
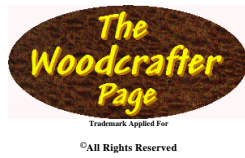
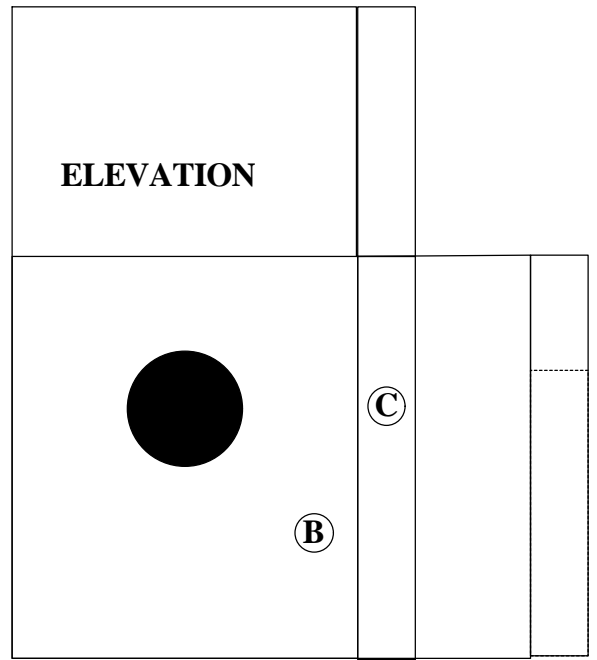
**Main Room.**

1. Locate, glue and nail the front entrance wall (A) to the two main walls (D) as indicated in detail 1. The wall is installed with the door opening down.

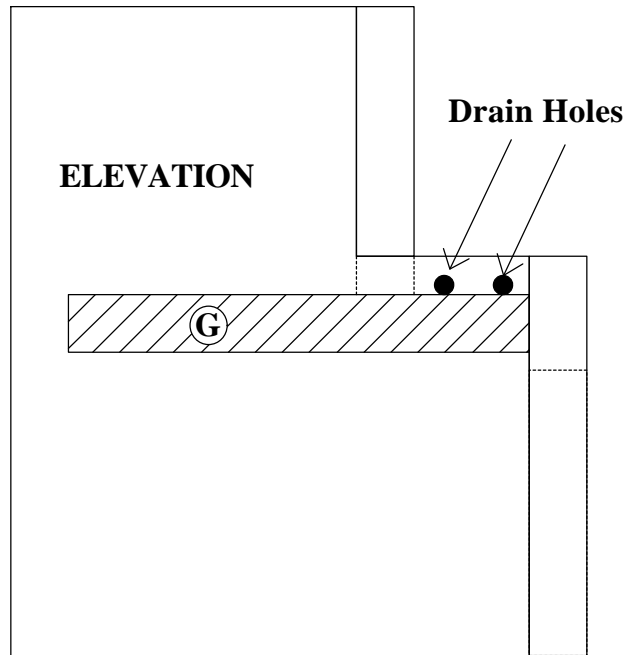




3



4





Trademark Applied For  
©All Rights Reserved

