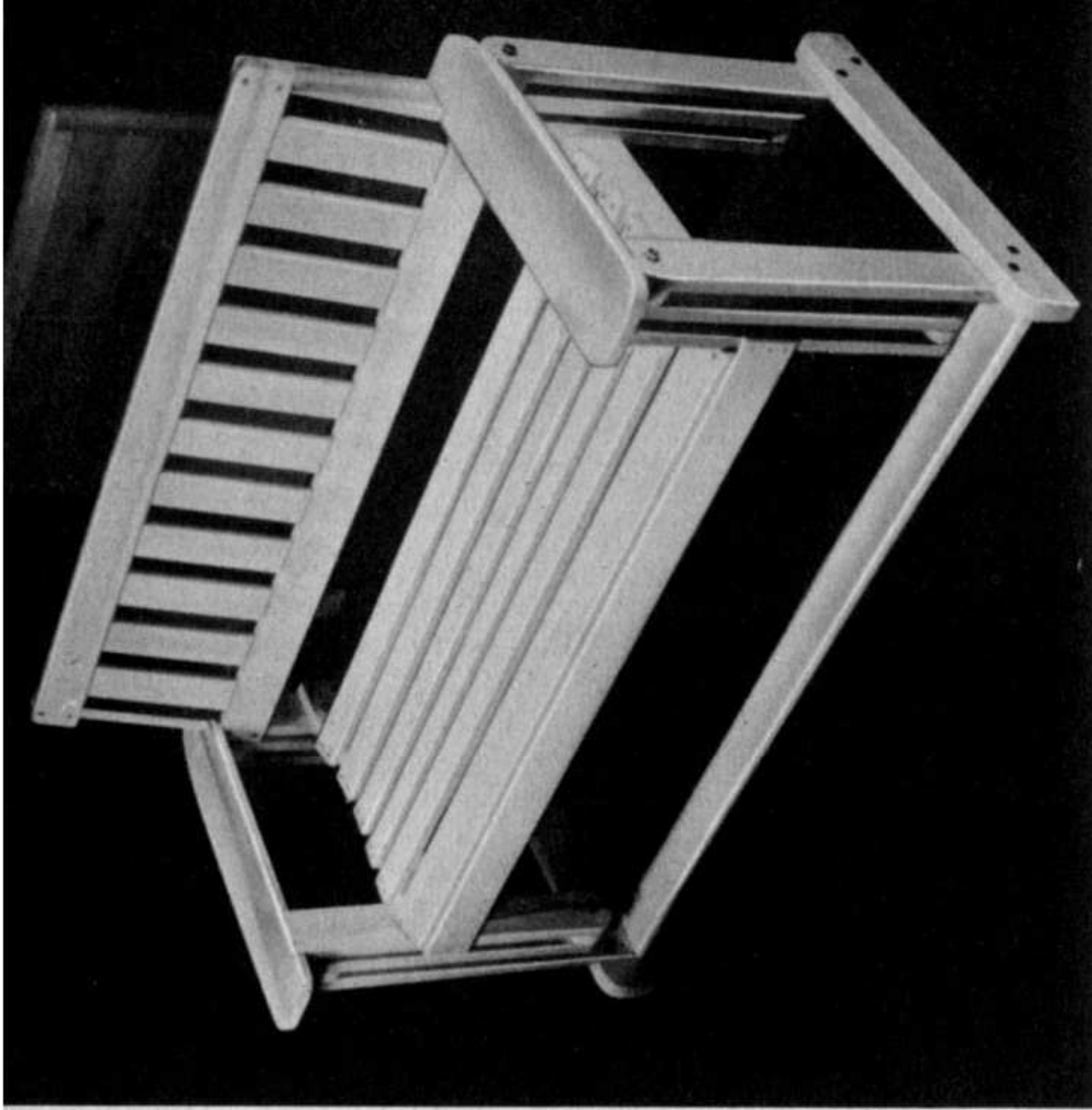


*Here is your set of
Detailed Plans
from*



Copyright © 2004

All Rights Reserved

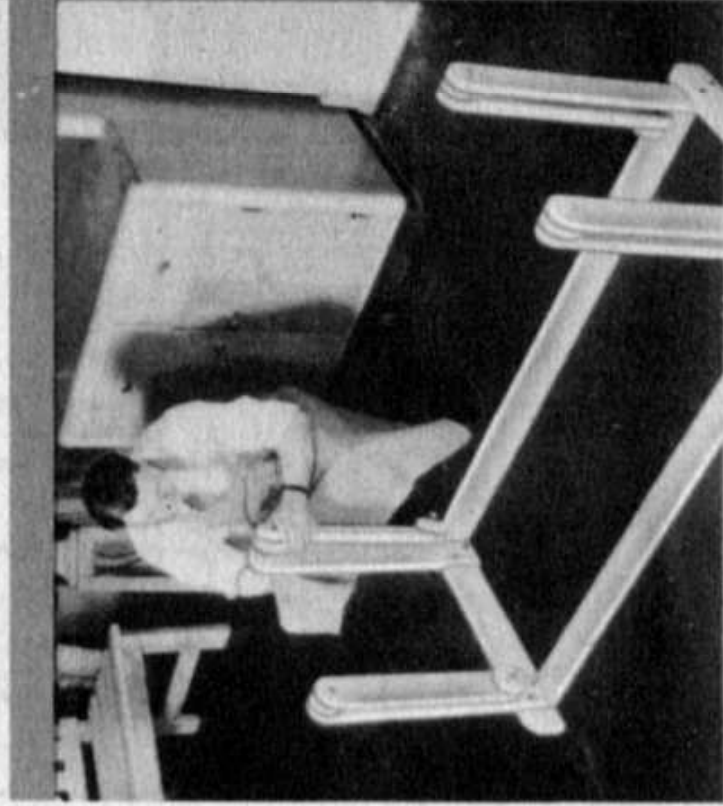


(Photo No. 1)

PORCH OR LAWN GLIDER

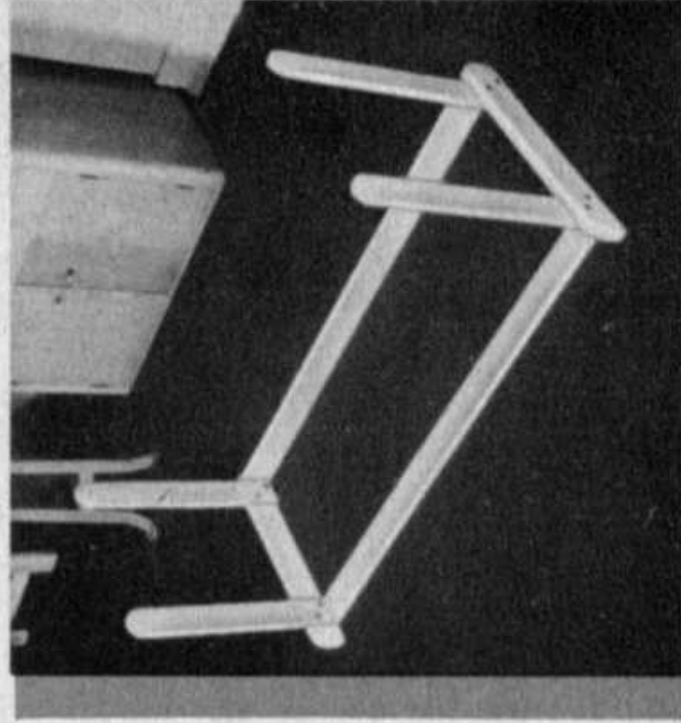
The glider as shown in the photos on this page should be made from hardwood lumber such as maple or birch. The supporting frame is built up first as shown in Photo 2. The swinging arms are then made and bushings made of pipe as shown in the drawing are inserted before the bolts are fastened in place. The seat itself is next built up as shown in the drawing and the unit is assembled as shown in Photo 4. The drawing (Page 25) shows all of the necessary dimensions and construction details for building. The supporting frame and the main seat

(Photo No. 2)

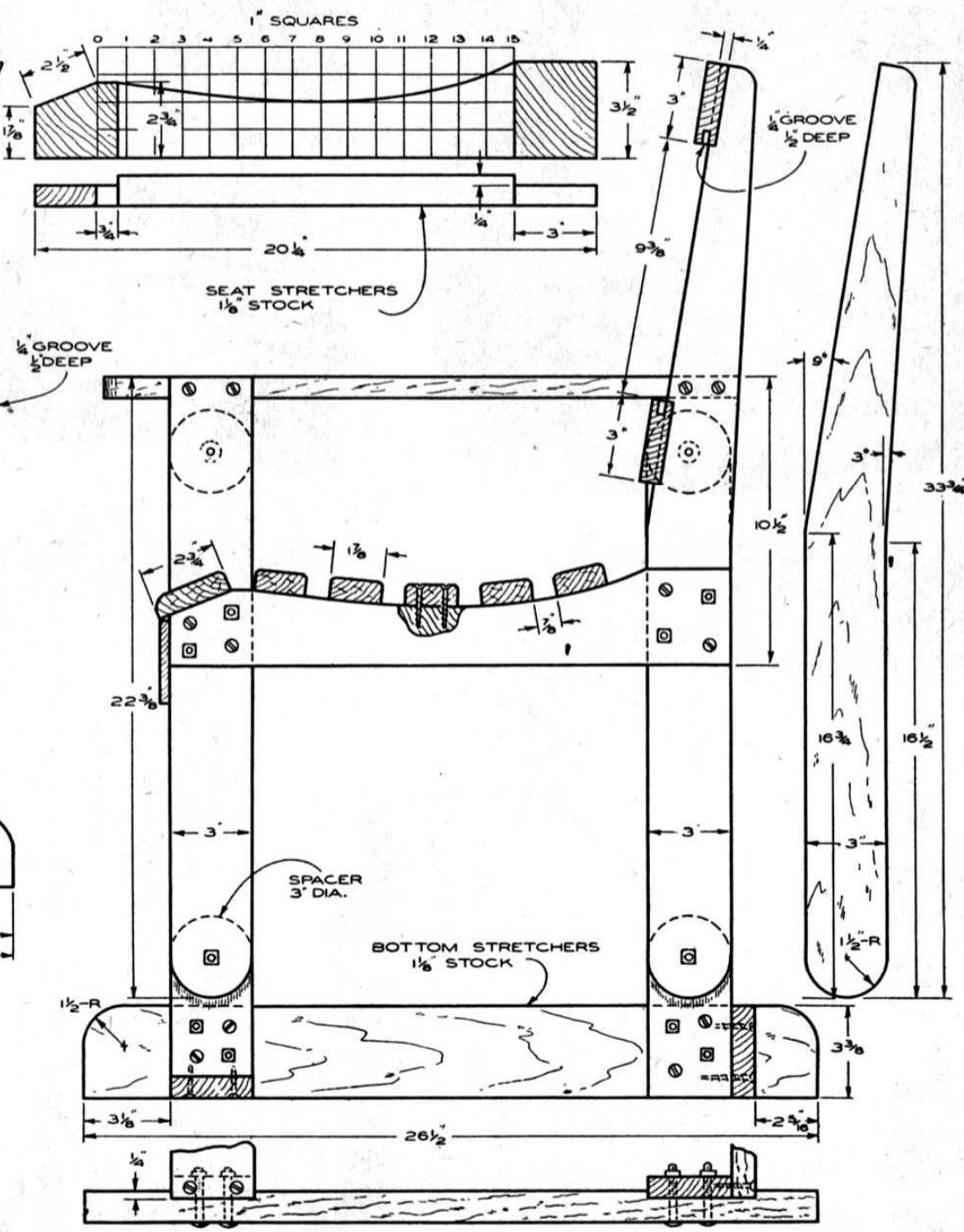
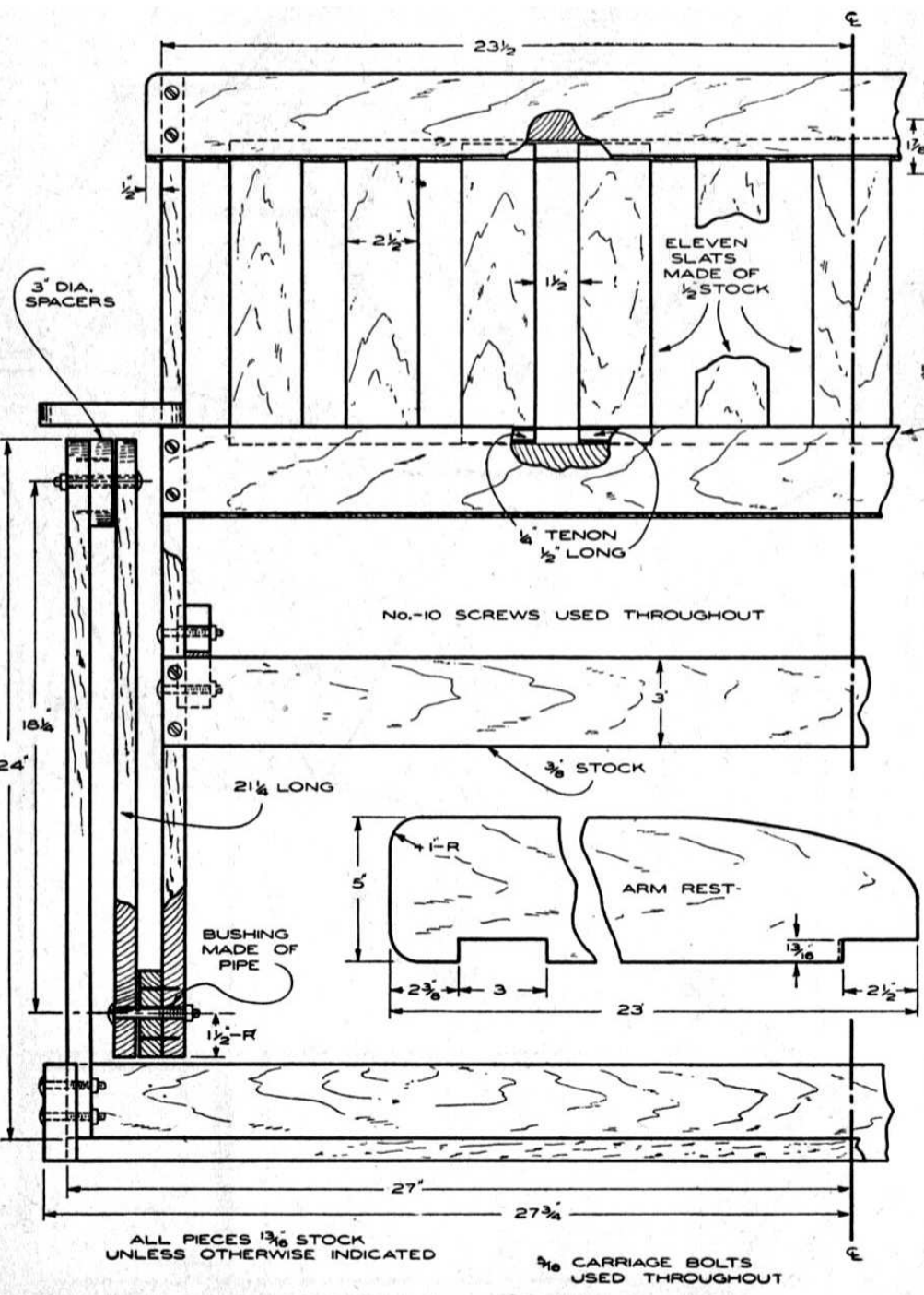


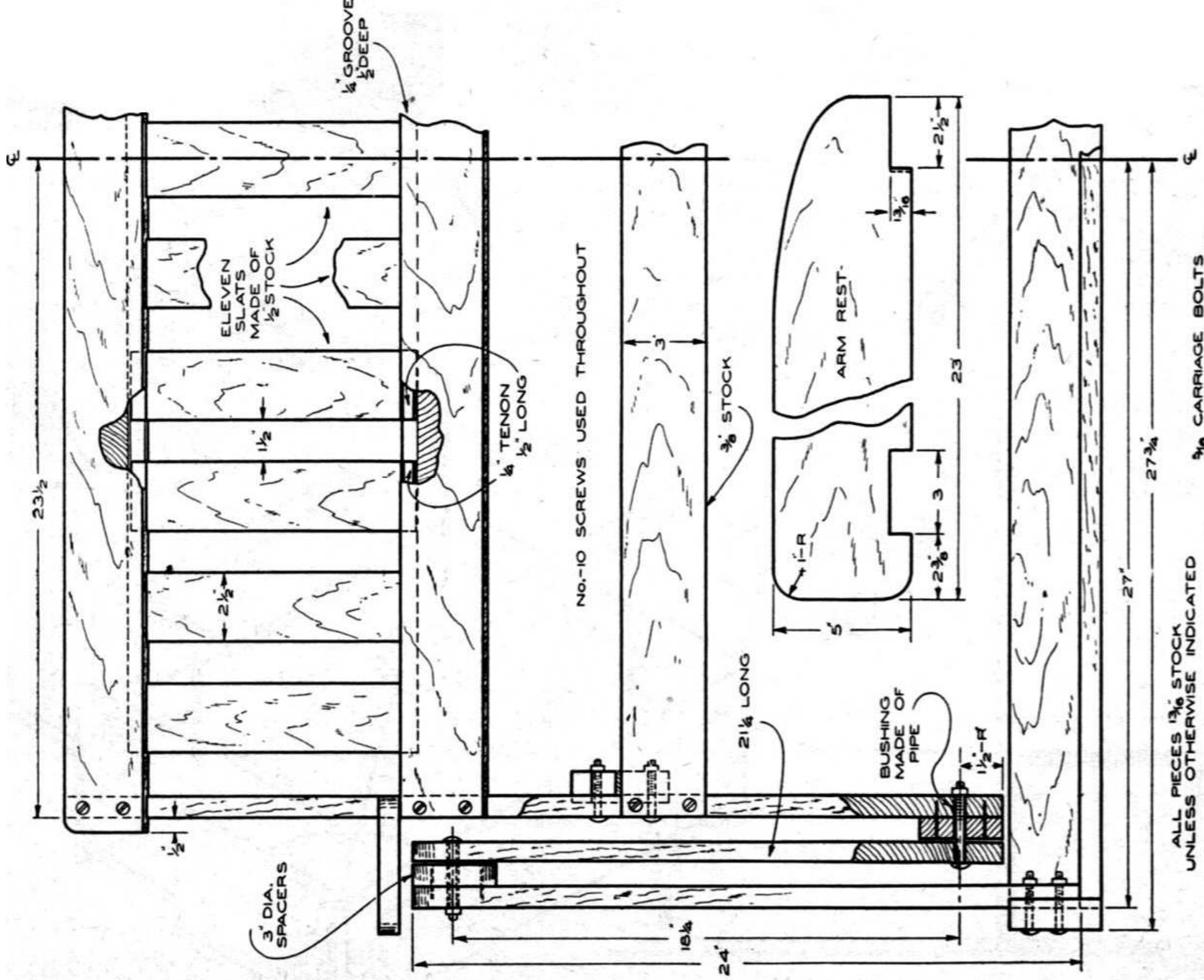
(Photo No. 3)

frame are fastened together with carriage bolts, the remainder of the assembly being made with flat-head wood screws. The whole unit should be finished with two coats of boiled oil followed by several coats of outside paint. The finished project will be a welcome addition to your porch or lawn.



(Photo No. 4)

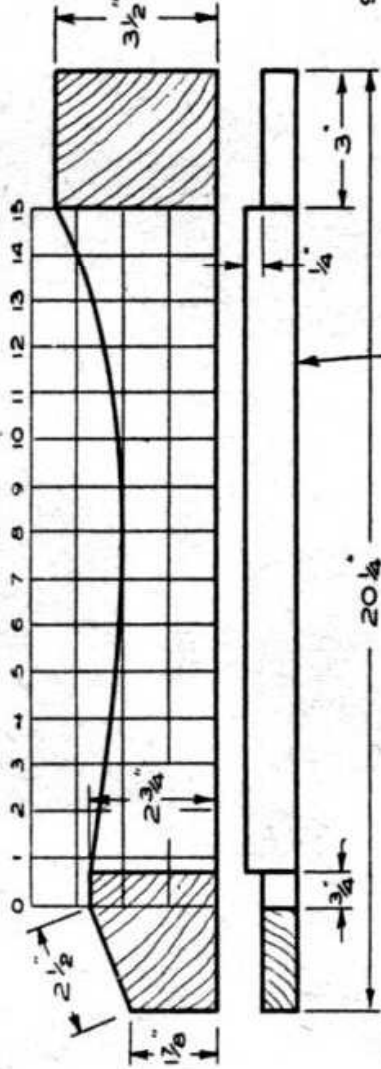




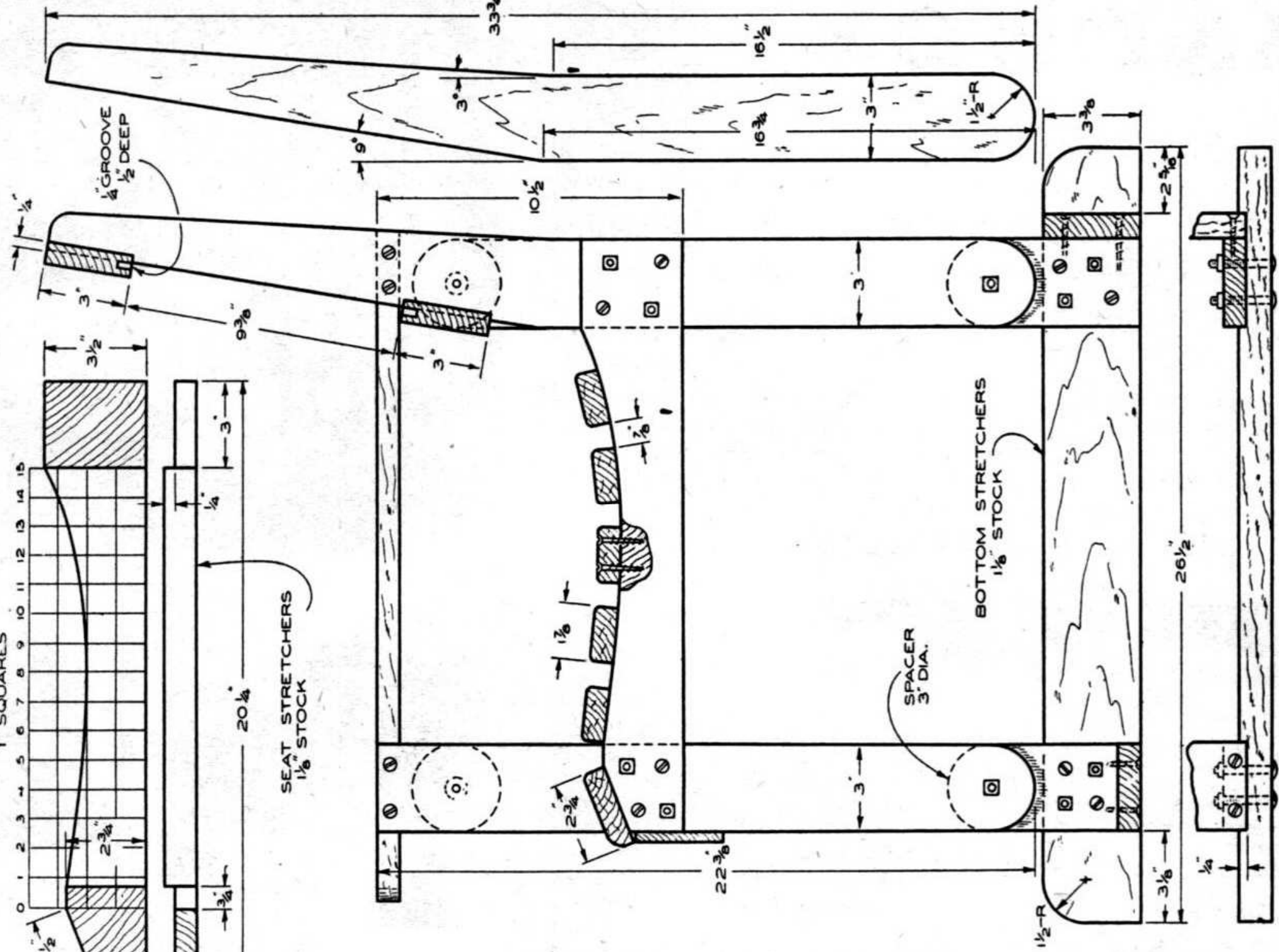
ALL PIECES $\frac{1}{16}$ STOCK UNLESS OTHERWISE INDICATED

$\frac{9}{16}$ CARRIAGE BOLTS

1" SQUARES



SEAT STOCKERS
 $1\frac{1}{8}$ " STOCK



26 1/2